



Experience the relaxed gentility
of a time gone by.

Whether you're passing through
briefly or taking a break from the
hectic pace and cares of your
day- to-day world, you will find
rest and respite at Federal House
Inn Historic Bed & Breakfast.
The welcoming calm is palpable
from the minute you step through
the door and the beds are so
comfortable, you will want to
take them home with you! And
then, there are the Breakfasts.
Your Breakfasts are carefully
designed with creativity and a
standard of quality not often
found today and, then, only in the
finest restaurants.



FEDERAL HOUSE INN
27 Route 25, Plymouth, NH 03264
T: 603-536-4644

<http://www.federalhouseinnnh.com>

A PLYMOUTH, NEW HAMPSHIRE
LANDMARK SINCE 1835.



FEDERAL HOUSE INN
HISTORIC
BED & BREAKFAST



2012/2013
ALPINE AND NORDIC
SKI & STAY PACKAGES

phone: 603-536-4644

toll free: 866-536-4644

<http://www.federalhouseinnnh.com>



SKI AND STAY

Package Details:

- ❖ **Two Nights' accommodations**
- ❖ **Two Course Breakfast Daily**
- ❖ **Afternoon Wine and Cheese Presentation Daily**
- ❖ **Evening Dessert Presentation Daily**
- ❖ **Two Adult Ski Passes for Waterville Valley**

Enjoy the romantic atmosphere of the antique Russian wood burning stove in the dining room, Ski all day and then soak in the hot tub under the stars at night.....

** DOWNHILL **

Weekend/Holiday Rates:

Deluxe: \$496 + taxes

Standard: \$454 + taxes

Weekday/Non-Holiday:

Deluxe: \$462 + taxes

Standard: \$420 + taxes

** NORDIC **

Deluxe: \$424 + taxes/\$450 (including rentals!) +taxes

Standard: \$360+ taxes/\$386(including rentals!) +taxes



"GIVE ME THE LUXURIES OF LIFE AND I WILL WILLINGLY DO WITHOUT THE NECESSITIES."

- FRANK LLOYD WRIGHT

We've left no stone unturned in our attempt to provide you with the luxuries *and* necessities that will make your stay memorable! This includes luxury bath amenities, 300 thread count sheets, plush towels, bathrobes, hairdryers, both feather and synthetic pillows and down comforters in the winter.



STANDARD ROOMS

Harry's Room and Sally's Room each offer Queen sized beds and private baths outside of the rooms. These rooms can be rented together and made connecting, a feature perfect for families who desire separate, yet adjoined sleeping arrangements. They offer all the same features and amenities of our deluxe rooms at a more affordable rate.



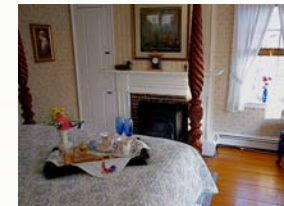
Harry's Room



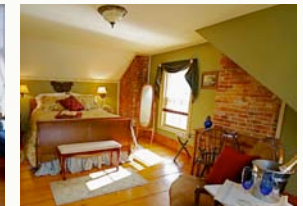
Sally's Room

DELUXE ROOMS

Doris', John Adams' and Grandpa Cummings' Rooms are all larger rooms with Queen sized beds and private baths. Doris' Room, on the second floor, boasts a fireplace and en suite bath with claw foot tub/shower in the bath. John Adams', on the third floor, offers a shower stall in the bath and a bird's eye view of the large, landscaped lot through a huge picture window. Grandpa's offers the same amazing view with the bath next door to the room. These rooms sleep up to 3 and possibly 4 persons with the addition of a cot or two.



Doris' Room



John Adams' Room

COMMON AREA



Dining Room and Library



Grandpa Cummings' Room